



Díli, 8 de Janeiro de 2025

Publicação de ata de conferência prévia

Prezados Candidatos,

Tornamos, por este meio, pública a ata de conferência prévia referente ao processo de aprovisionamento para o projeto de **Rehabilitation of Road Package A (Município Manufahi), National Road (Arterial A14) Same Luak – Betano, L = 10 Km (Part 2 – 5.05 KM)**

(TENDER/171/MOP-2024) que decorreu nas instalações da Comissão Nacional de Aprovisionamento no dia 7 de Janeiro de 2025 pelas 10 horas.

Publication of Minutes of Pre-Bid Meeting

Dear Bidders,

We hereby publish the minutes of Pre-Bid Meeting regarding the procurement process for **Rehabilitation of Road Package A (Município Manufahi), National Road (Arterial A14) Same Luak-Betano, L = 10 KM (Part 2 – 5.05 KM) (TENDER/171/MOP-2024)** which was held at National Procurement Commission's premises on the 7 January 2025 at 10:00 am.



Hermingardo Albano Soares
Diretor-Executivo da CNA



**REHABILITATION OF ROAD PACKAGE A, (MUNICIPIO MANUFAHI),
NATIONAL ROAD (ARTERIAL A14) SAME LUAK-BETANO, L=10 KM (PART 2,
5.05 KM)**

TENDER/171/MOP-2024

Minutes of Pre-Bid Meeting

07 January, 2025

1. The pre-bid meeting was held at 10:00 hours local time on 07 January 2025 at the Conference Room of the National Procurement Commission (NPC) at Avenida de Balide, Dili Timor-Leste. This meeting was attended by representatives from the National Procurement Commission (NPC), Project Owner-Ministry of Public Works (MOP) and prospective bidders.
 - a. Project identification: **TENDER/171/MOP-2024**
 - b. Project owner: **Ministry of Public Works (MOP)**
 - c. Name of the project: **REHABILITATION OF ROAD PACKAGE A, (MUNICIPIO MANUFAHI), NATIONAL ROAD (ARTERIAL A14) SAME LUAK-BETANO, L=10 KM (PART 2, 5.05 KM)**
2. The meeting was followed by a brief presentation on the Bidding Document by Ms. Odelia Hau, Junior Procurement Officer of NPC. The presentation slides are enclosed in **Annex-1**.
3. The questions-and-answers session of the pre-bid meeting took place immediately after the presentation. The questions-and-answer are enclosed in **Annex-2** (Clarification No. 1).
4. The pre-bid meeting was concluded at 11:00 hours. Ms. Odelia Hau thanked all the participating bidders for their active participation in the pre-bid meeting.

Dili, 07 January 2025

By the jury.



No.	Name	Position	Signature
1	Mr. Abdul Basit	President	
2	Mr. Hermengildo Fernandes	Effective Member	
3	Ms. Titania Rainita	Effective Member	
4	Mr. Martinho da C. Graciano	Effective Member	
5	Ms. Celestina Menezes	Suplement Member	

Attachment:

- Annex-1 PDF file of Presentation slides
- Annex-2 Clarification No. 1



PRE-BID MEETING

- 1. REHABILITATION OF ROAD PACKAGE A, (MUNICIPIO MANUFAHI), NATIONAL ROAD (ARTERIAL A14) SAME LUAK-BETANO, L=10 KM (PART 1, 5.1 KM) TENDER/176/MOP-2024**
- 2. REHABILITATION OF ROAD PACKAGE A, (MUNICIPIO MANUFAHI), NATIONAL ROAD (ARTERIAL A14) SAME LUAK-BETANO, L=10 KM (PART 2, 5.05 KM) TENDER/171/MOP-2024**

7 JANUARY 2025, 10:00 AM HOURS



**MINISTÉRIO DO PLANEAMENTO
E INVESTIMENTO ESTRATÉGICO
IX GOVERNO CONSTITUCIONAL**



Comissão Nacional de Aprovisionamento

- A Bidder may be a natural person, private entity, or government-owned enterprise subject to ITB 4.5 or any combination of them with a formal intent to enter into an agreement or under an existing agreement in the form of a Joint Venture. (**ITB 4.1**)

In the case of a Joint Venture:

- a) all partners shall be jointly and severally liable, and
 - b) the JV shall nominate a Representative who shall have the authority to conduct all business for and on behalf of any and all the parties of the JV during the bidding process and, in the event the JV is awarded the Contract, during contract execution.
- The maximum budget are:

Project Number	Maximum Budget (US\$)	Remarks
TENDER/171/MOP-2024	6,840,339.41 (inclusive of Taxes and other expense and profit)	The employer may disqualify evaluated price bids exceeding maximum budget
TENDER/176/MOP-2024	5,090,043.30 (inclusive of Taxes and other expense and profit)	

- For **clarification purposes** only, the Employer's address is:
Attention: Mr. Hermingardo Albano Soares, Executive Director of National Procurement Commission (NPC)
Address: Avenida de Balide, Património Estado (Ex. Dempal), Dili, Timor-Leste
City: Dili
Country: Timor-Leste
Email: om@cna.gov.tl; gf@cna.gov.tl **copy to:** as@cna.gov.tl, ns@cna.gov.tl, ab@cna.gov.tl, vc@cna.gov.tl, nf@cna.gov.tl, tr@cna.gov.tl, cmenezes@cna.gov.tl

The deadline for the submission of requests for clarification shall be **twenty one (21) calendar days before the deadline for submission of bids. (BDS, ITB 7.1)**



- **The Site visit is mandatory.**

For the site-visit information, the bidder may contact NPC through email om@cna.gov.tl; gf@cna.gov.tl; **copy to:** as@cna.gov.tl; ns@cna.gov.tl; ab@cna.gov.tl; vc@cna.gov.tl; nf@cna.gov.tl; tr@cna.gov.tl; cmenezes@cna.gov.tl; or may contact the following employer/owner representatives:

All the costs of visiting the Site shall be at the Bidder's own expense.

The attendance to the Site Visit is **mandatory.**

The site visit will be on Friday, 10 January 2025.

Contact Name: Sr. Martinho Da Costa Graciano- Assesor Tecnico

Contact Number: +670 77719641



- **The deadline for bid submission is:**

Projects	Date	Time	Place
TENDER/171/MOP-2024	29 January 2025	15:00 PM hours local time	National Procurement Commission, Rua de Balide, Património Estado, Dili, Timor-Leste
TENDER/176/MOP-2024	30 January 2025	15:00 PM hours local time	

Any bid received after the deadline for submission of bids shall be declared late, rejected, and returned unopened to the Bidder.

- The bidder shall submit the following: **(BDS, ITB 20.1)**
 - a) Technical Bid: **one (1) original, two (2) copies and one (1) soft copy (USB)**
 - b) Price Bid: **one (1) original, One (1) copy and one (1) soft copy (USB)**



- **The bid validity period shall be: 180 days (BDS, ITB 18.1)**
- A bid security **is required**.

Project Number	Amount of Bid Security (US\$)	Remarks
TENDER/171/MOP-2024	68,000.00	<u>BDS, ITB 19.1</u> The bid security shall be valid twenty-eight (28) days beyond the original validity period of the bid, or beyond any period of extension if requested under ITB 18.2
TENDER/176/MOP-2024	50,000.00	

Note: Bid Security Validity Period Should be (180+28) days from the date of the Bid Submission.



The Technical Bid shall comprise of the following: (ITB 11.2)

- a) Letter of Technical Bid;
- b) Bid Security , in accordance with **ITB 19.1**;
- c) alternative bids, at Bidder's option and if permissible, in accordance with **ITB 13.1**;
- d) written confirmation authorizing the signatory of the Bid to commit the Bidder, in accordance with **ITB 20.2**;
- e) documentary evidence in accordance with **ITB 17** establishing the Bidder's qualifications to perform the contract;
- f) Technical Proposal in accordance with **ITB 16**;
- g) Declaration by the bidder, under oath, of unconditional acceptance of the bidding document in accordance with letter of technical bid;
- h) Declaration by the bidder, under oath, that he is not prevented from participating in the procurement procedure in accordance with letter of technical bid;
- i) Any other document required in BDS

The Price Bid shall comprise of the following: (ITB 11.3)

- a) Letter of Price Bid;
- b) completed Price Schedules, in accordance with **ITB 12** and **14**;
- c) alternative price Bids, at Bidder's option and if permissible, in accordance with **ITB 13**;
- d) Note justifying an abnormally low bid price, when the price presented in the bid is abnormally low, an abnormally low price is the price that does not reach 70% of the value of maximum budget.
- e) Any other document required in the BDS.

• **Language of the Bid:**

- ✓ The language of the Bid is **English or Portuguese. (BDS-ITB 10.1)**
- ✓ Bid shall be submitted in **English or Portuguese languages.**
- ✓ All correspondence exchange shall be **in English and in Portuguese language.**



Important Points

- The prices quoted by the Bidder: **shall be Fixed.(BDS-ITB 14.5)**

The price will not be adjustment due to rise or fall in the cost of labor, materials, goods and other inputs to the Works. Hence Tables of Adjustment Data is deleted.

- All duties, taxes, and other levies payable by the Contractor under the Contract, shall be included in the rates and prices and the total Bid Price submitted by the Bidder. **(BDS-ITB 14.7)**

Information on the tax obligations in the Employer's Country can be found at <http://www.mof.gov.tl>

- The unit rates and the prices shall be quoted entirely in: **United States Dollars (USD). (BDS-ITB 15.1)**

Payments shall be made in: **United States Dollars (USD).**



Important Points

- Subject to the succeeding sentences, any bid not accompanied by an irrevocable and callable **bid security** shall be rejected by the Employer as nonresponsive.

If a Bidder submits a bid security that **(i) deviates in form, amount, and/or period of validity, or (ii) does not provide sufficient identification of the Bidder (including, without limitation, failure to indicate the name of the Joint Venture or, where the Joint Venture has not yet been constituted, the names of all future Joint Venture Partners)**, the Employer shall request the Bidder to submit a compliant bid security within **10 days** of receiving such a request. Failure to provide a compliant bid security within the prescribed period of receiving such a request shall cause the rejection of the Bid. **(ITB-BDS 19.4)**

- **The written confirmation of authorization to sign on behalf of the Bidder shall consist of (BDS, ITB 20.2)**

“An organizational document, board resolution or its equivalent, or power of attorney specifying the representative’s authority to sign the Bid on behalf of, and to legally bind, the Bidder. If the Bidder is an intended or an existing Joint Venture, the power of attorney should be signed by all partners and specify the authority of the named representative of the Joint Venture to sign on behalf of, and legally bind, the intended or existing Joint Venture. If the Joint Venture has not yet been formed, also include evidence from all proposed Joint Venture partners of their intent to enter into a Joint Venture in the event of a contract award in accordance with ITB 11.2.”



Evaluation and Qualification Criteria

- The evaluation shall be based on the documents that the Bidder has submitted with its Bid. Therefore, the Bidder shall provide all the information requested in the forms included in Section 4 (Bidding Forms) to enable the Employer to make an evaluation. Failure to submit the necessary information may result in the rejection of the Bid. The First Stage has been divided into two phases.
 1. Technical Bids Evaluation - First Stage
 2. Price Bids Evaluation - Second Stage
- **Technical Bid Evaluation– First Stage:**
First Phase: The first phase will be the determination of the Bidder’s compliance to the basic bidding criteria and eligibility requirements to be undertaken on a “Pass or Fail” basis.
- **Technical Bids Evaluation– Second Phase:**
The second phase in the evaluation process is the evaluation of Technical Bids and this shall be undertaken in accordance with the technical evaluation criteria, sub-criteria, and scoring system specified below. The maximum technical score is **100 Points** and the passing score for bidder qualification is **75 Points**.

Only those Bidders who passed in the First Phase of evaluation shall be considered further in the Second Stage of Technical evaluation.



Evaluation and Qualification Criteria Tender/176/MOP-2024

Criteria Requirement	Compliance Requirements				Documents Submission Requirements	Weight
	Single Entity	Joint Venture				
		All Partners Combined	Each Partner	One Partner		
Historical Financial Performance						
Submission of audited financial statements or, if not required by the law of the Bidder's country, other financial statements acceptable to the Employer, for the last three (3) years (2021, 2022 and 2023) to demonstrate the current soundness of the Bidder's financial position. As a minimum, the Bidder's net worth for the last year calculated as the difference between total assets and total liabilities should be positive.	Must meet requirement	Not applicable	Must meet requirement	Not applicable	Form FIN - 1 with attachments	5
Average Annual Construction Turnover						
Minimum average annual construction turnover of US\$ 5,750,000.00 calculated as total certified payments received for contracts in progress or completed, within the last three (3) years (2021, 2022 and 2023) .	Must meet requirement	Must meet requirement	Must meet 25% of the requirement	Must meet 40% of the requirement	Form FIN - 2 with attachments	5
Financial Resources						
For Single Entities/ For Joint Ventures The Bidder must demonstrate that its financial resources defined in FIN - 3, less its financial obligations for its current contract commitments defined in FIN - 4, meet or exceed the total requirement for the Subject Contract of US\$ 950,000.00	Must meet requirement	Not applicable	Must meet 25% of the requirement	Must meet 40% of the requirement	Form FIN – 3 and Form FIN – 4 with attachments	10



Evaluation and Qualification Criteria Tender/176/MOP-2024

Criteria Requirement	Compliance Requirements			Documents	Weight	
	Single Entity	Joint Venture		Submission Requirements		
		All Partners Combined	Each Partner			One Partner
<u>Contracts of Similar Size and Nature</u>						
<p>Participation as a prime contractor or joint venture partner in at least two contracts that have been successfully or substantially completed between 1st January 2017 and bid submission deadline and that are similar to the proposed works, where the value of the Bidder's participation under each contract exceeds US\$ 4,000,000.00</p> <p>The similarity of the contracts shall be based on Section 6, Works' Requirements and Scope of Works, specify the minimum key requirements in terms of physical size, complexity, construction method, technology and/or other characteristics.</p>	Must meet requirement	Must meet requirement1	N/A	N/A	Form EXP - 1 with attachments	15

In the case of JV, the value of contracts completed by its members shall not be aggregated to determine whether the requirement of the minimum value of a single contract has been met. Instead, each contract performed by each member shall satisfy the minimum value of a single contract as required for single entity, if the Bidder comprises the same Joint Venture, the 'Single Entity' requirements will apply.

Substantial completion shall be based on 80% or more works completed under the contract.

For contracts under which the Bidder participated as a joint venture member, only the Bidder's share, by value, shall be considered to meet this requirement

The Bidder past experience as subcontractor shall not be used by the Bidder to qualify in the technical evaluation.



Evaluation and Qualification Criteria Tender/176/MOP-2024

Criteria Requirement	Compliance Requirements				Documents	Weight
	Single Entity	Joint Venture			Submission Requirements	
		All Partners Combined	Each Partner	One Partner		
<u>Construction Experience in Key Activities</u>						
For the above and any other contracts that have been successfully or substantially completed as prime contractor or joint venture member between 1st January 2017 and Bid submission deadline, a minimum construction experience in the following key activities successfully completed in one contract ¹ : Construction of minimum of 5 km of similar road in mountainous terrain with slope protection works (retaining walls, gabions, bioengineering or similar); drainage works and earth excavation and moving operations.	Must meet requirements	Must meet requirements	N/A	N/A	Form EXP – 2 with attachments	20

In addition to the submission requirement Form EXP-1 and Form EXP-2, the Bidder shall provide the following supporting documents in sufficient detail to verify the contract name, value and completion time. If the documents are other than in English, an accurate certified translation of these documents in English shall be provided:

1. Signed Contract Agreement, and
2. Taking-Over Certificate, Contract Completion Certificate or Performance Certificate
3. Bill of Quantities,



Evaluation and Qualification Criteria Tender/171/MOP-2024

Criteria Requirement	Compliance Requirements				Documents Submission Requirements	Weight
	Single Entity	Joint Venture				
		All Partners Combined	Each Partner	One Partner		
Historical Financial Performance						
Submission of audited financial statements or, if not required by the law of the Bidder's country, other financial statements acceptable to the Employer, for the last three (3) years (2021, 2022 and 2023) to demonstrate the current soundness of the Bidder's financial position. As a minimum, the Bidder's net worth for the last year calculated as the difference between total assets and total liabilities should be positive.	Must meet requirement	Not applicable	Must meet requirement	Not applicable	Form FIN - 1 with attachments	5
Average Annual Construction Turnover						
Minimum average annual construction turnover of USD 9,000,000.00 calculated as total certified payments received for contracts in progress or completed, within the last three (3) years (2021, 2022 and 2023).	Must meet requirement	Must meet requirement	Must meet 25% of the requirement	Must meet 40% of the requirement	Form FIN - 2 with attachments	5
Financial Resources						
The Bidder must demonstrate that its financial resources defined in FIN - 3, less its financial obligations for its current contract commitments defined in FIN - 4, meet or exceed the total requirement for the Subject Contract of USD 1,140,000.00	Must meet requirement	Must meet requirement	Must meet 25% of the requirement	Must meet 40% of the requirement	Form FIN - 3 and Form FIN - 4 with attachments	10



Evaluation and Qualification Criteria Tender/171/MOP-2024

Criteria	Compliance Requirements			Documents	Weight	
Requirement	Single Entity	Joint Venture		Submission Requirements		
		All Partners Combined	Each Partner			One Partner
<u>Contracts of Similar Size and Nature</u>						
<p>Participation as a prime contractor or joint venture partner in at least two similar contracts that have been successfully or substantially completed between 1st January 2017 and bid submission deadline and that are similar to the proposed works, where the value of the Bidder's participation under each contract exceeds USD 5,100,000.00</p> <p>The similarity of the contracts shall be based on Section 6. Employers' Requirements and Scope of Works, specify the minimum key requirements in terms of physical size, complexity, construction method, technology and/or other characteristics.</p>	Must meet requirement	Must meet requirement1	N/A	N/A	Form EXP - 1 with attachments	20

In the case of JV, the value of contracts completed by its members shall not be aggregated to determine whether the requirement of the minimum value of a single contract has been met. Instead, each contract performed by each member shall satisfy the minimum value of a single contract as required for single entity, if the Bidder comprises the same Joint Venture, the 'Single Entity' requirements will apply.

Substantial completion shall be based on 80% or more works completed under the contract.

For contracts under which the Bidder participated as a joint venture member, only the Bidder's share, by value, shall be considered to meet this requirement

The Bidder past experience as subcontractor shall not be used by the Bidder to qualify in the technical evaluation.



Evaluation and Qualification Criteria Tender/171/MOP-2024

Criteria Requirement	Compliance Requirements			Documents Submission Requirements	Weight	
	Single Entity	Joint Venture				
		All Partners Combined	Each Partner	One Partner		
<u>Construction Experience in Key Activities</u>						
<p>For the above and any other contracts that have been successfully or substantially completed as prime contractor or joint venture member between 1st January 2017 and Bid submission deadline, a minimum construction experience in the following key activities successfully completed in one contract¹:</p> <p>Construction of minimum of 5 km of similar road in mountainous terrain with slope protection works (retaining walls, gabions, bioengineering or similar); drainage works and earth excavation and moving operations.</p> <p><i>The similarity of the contracts shall be based on the following: Based on Scope of Works, specify the minimum key requirements in terms of physical size, complexity, construction method, technology and/or other characteristics including part of the requirements.</i></p>	Must meet requirements	Must meet requirements	N/A	N/A	Form EXP – 2 with attachments	15

In addition to the submission requirement Form EXP-1 and Form EXP-2, the Bidder shall provide the following supporting documents in sufficient detail to verify the contract name, value and completion time. If the documents are other than in English, an accurate certified translation of these documents in English shall be provided:

1. Signed Contract Agreement, and
2. Taking-Over Certificate, Contract Completion Certificate or Performance Certificate
3. Bill of Quantities,

Evaluation and Qualification Criteria For Both Projects

Criteria					Compliance Requirements			Documents	Weight	
Requirement					Single Entity	Joint Venture			Submission Requirements	
						All Partners Combined	Each Partner	One Partner		
Personnel										
The Bidder must demonstrate that it has the following key personnel that meet the following minimum requirements:					Must meet requirements	Must meet requirements	N/A	N/A	Form PER – 1 & Form PER – 2	7
Position	Number of Key personnel	Educational Qualification	Total Number of Years of Experience	Number of Years of Experience in Similar Works						
Project Manager	1	Civil Engineering or Equivalent	7	4						
Pavement / Highway Engineer	1	Civil Engineering or Equivalent	5	3						
Bridge Engineer	1	Civil Engineering or Equivalent	5	3						
Quality Assurance/ Materials Engineer	1	Civil Engineering or Equivalent	4	2						
Quantity Surveyor Engineer /	1	Civil Engineering or Equivalent	4	2						
Safety Officer	1	Relevant Educational Qualification	4	2						
Environmental Officer	1	Relevant Educational Qualification	4	2						
All proposed key personnel should attach evidence of college degree attained and other proof of professional expertise) in Form PER – 2: resume of proposed key and support to Key Personnel.										



Evaluation and Qualification Criteria For Both Projects

Criteria			Compliance Requirements			Documents	Weight	
Requirement			Single Entity	Joint Venture		Submission Requirements		
				All Partners Combined	Each Partner			One Partner
Equipment								
The Bidder must demonstrate that it has the key equipment listed below:			Must meet requirements	Must meet requirements	N/A	N/A	Form EQU	8
No	Equipment Type and Characteristics	Minimum Number Required						
1	Excavator 200HP	4						
2	Tandem Roller 6 – 8 ton	2						
3	Tire Roller (8 to 10 Ton)	2						
4	Wheel Loader	4						
5	Dump Truck 6-8 cu.m	5						
6	Motor Grader	2						
7	Water Tank	2						
8	Vibratory Roller	2						
9	Transit Mixer 3.5 to 4.5 cubic meter	2						
10	Asphalt Paver/Finisher, 4.0m width	1						
11	Asphalt Mixing Plant	1						
12	Asphalt Sprayer	1						
13	Air Compressor	1						
14	Generator Set	1						
15	Concrete Batching Plant	1						
Note: Supporting document required: <ul style="list-style-type: none"> • Owned – provide proof of ownership/purchase agreement • Rented/Leased – provide rental agreement/ lease agreement • The age of the equipment to be used under the contract shall not be more than 7 years. The evidence for the date of equipment original manufacturing is required. 								
Site Organization								
Bidders shall submit an organization chart showing the proposed management, supervisory, support and reserved staff to be employed for all			Must meet requirements	Must meet requirements	N/A	N/A	Form TP- 1	5



Evaluation and Qualification Criteria For Both Projects

Criteria Requirement	Compliance Requirements			Documents	Weight	
	Single Entity	Joint Venture		Submission Requirements		
All Partners Combined		Each Partner	One Partner			
construction operations, showing responsibilities and lines of communication. This chart shall also show responsibilities for management and supervision of subcontractors, staff to be employed having specific health and safety responsibilities, accident reporting and medical facilities to be provided on the site. The site organizational chart should represent the contractor's site layout and planning and contractor's organization for maintaining safety, quality control standards and temporary facilities required for the project.						
<u>Method Statement</u>						
Construction Method Statement should reflect a roadmap for safely and efficiently completing the project while managing risks and maintaining quality control. It should be tailored according to the project specific information, scope of work, key activities, work methodology, site conditions survey, program of work, financial program and compliance to existing labor laws and standard.	Must meet requirements	Must meet requirements	N/A	N/A	Form TP- 2	5
<u>Mobilization Schedule</u>						
Mobilization Schedule outlining the site installation plan, mobilization and demobilization of resources in coincidence with site organization. It ensures that initial project planning and pre-mobilization will be done properly to start the construction process efficiently and on time. The contractor shall not carry out mobilization to site unless the engineer gives consent that appropriate measures are in place.	Must meet requirements	Must meet requirements	N/A	N/A	Form TP- 3	5
<u>Construction Schedule</u>						
Construction Schedule, covering the entire construction in MS Project format showing the schedule and sequence of major work activities, project milestones and critical path. The schedule includes a list of all the activities that need to be completed and the timeframe for each activity. Projected	Must meet requirements	Must meet requirements	N/A	N/A	Form TP- 4	5



Evaluation and Qualification Criteria For Both Projects

Criteria Requirement	Compliance Requirements			Documents Submission Requirements	Weight	
	Single Entity	Joint Venture				
		All Partners Combined	Each Partner	One Partner		
works for surveys, investigations, working drawings and works during defects liability period.						
<u>Local Development Statement</u>						
Bidder must submit a Local Development Statement clearly stating the Contractor's commitment to create local jobs (i.e. skilled and unskilled personnel including admin staff, clerk, drivers, security, cleaners, as well as other staff involved in the execution of the project and included in the contractor's payroll), identify the estimated number of Timorese personnel to be employed, maximize the use of local materials, and present a detailed plan for capacity building of Timorese personnel. The local participation content requirement should be at least 10% of the total bid price and is confirmed in this statement. Local participation that is more than 10% will obtain a higher score.	Must meet requirements	Must meet requirements	N/A	N/A	Form TP- 5	5
<u>Environmental and Social Management</u>						
The bidders shall submit proposed comprehensive and concise environmental and social management strategies and implementation plan to be adopted on all construction operations. These details shall include a description of supervision arrangements to monitor environmental and social management strategies in managing the noise and vibration, health and safety, aggregate extraction, solid waste management, traffic management, hazardous waste handling, community disruption during construction activities, sexual exploitation and abuse prevention and implementation plan of STI, STD and HIV/AIDS alleviation program and staff to be employed having specific Environmental and Social Management responsibilities.	Must meet requirements	Must meet requirements	N/A	N/A	Form TP- 6	5



Evaluation and Qualification Criteria For Both Projects

The scoring shall be in accordance with the following table:

Quality	Score (%)	Score Definition
EXCELLENT	100	Bid <u>significantly exceeds</u> the sub - criteria requirements
VERY GOOD	90 - 99	Bid marginally <u>exceeds</u> the sub - criteria requirements
ABOVE	80 - 89	Bid fully <u>meets</u> the sub - criteria requirements
AVERAGE	70 - 79	Bid partially meets the sub - criteria requirements
BELOW	1 - 69	Bid meets some sub - criteria requirements with deficiencies
NON-COMPLYING	0	Bid either does not comply with the sub-criteria requirements or does not provide enough information



Some More Details Particular Conditions of Contract

PCC 1.1.27	The Defects Notification Period: 365 days
PCC 1.1.31	Employer's name: Ministry of Public Works
PCC 1.1.84	Time for Completion: 1. TENDER/171/MOP-2024 = 540 Days from Notice to Proceed 2. TENDER/176/MOP-2024 = 480 Days from Notice to Proceed
PCC 1.4	Governing Law: The Law of the Democratic Republic of Timor-Leste Ruling language: English and Portuguese Language for communications: English and Portuguese
PCC 1.15	Total liability of the Contractor to the Employer under or in connection with the Contract: 100% of Accepted Contract Amount
PCC 2.1	Time for access to the Site: The right of access to and possession of the site shall be given within 90 Days after contract effectiveness.



Some More Details Particular Conditions of Contract

PCC 4.2	<p>Performance Security: The performance security will be in the form of an unconditional bank guarantee in the amount of 5 % (five percent) of the Accepted Contract Amount. Or 10 % (ten percent) of the Accepted Contract Amount if the award falls on a bid that contains an abnormally low price.</p> <p>If the bank issuing Performance Security is located outside Timor-Leste, it shall be counter-guaranteed by a bank in Timor-Leste.</p> <p>The guarantee is presented by the bidder at least five days before signing the contract.</p> <p>The term of effectiveness of the Performance Security is 30 days after the end of the period of execution of the contract.</p>
PCC 8.8	<p>Delay damages payable for each day of delay 0.05% of the Accepted Contract Price per day, in the currencies and proportions in which the Contract Price is payable</p> <p>Maximum amount of delay damages: Twenty percent (20%) of the Accepted Contract Amount</p>
PCC 14.3	<p>Period Payment: Payments may be made within a maximum period of 60 days after Employer's issuance of interim payment certificate.</p>



Some More Details **Particular Conditions of Contract**

GCC 14.2	<p>The Advance Payments shall be: Fifteen percent (15%) of the Accepted Contract Amount “The Contractor shall obtain (at the Contractor’s cost) an Advance Payment Guarantee in amounts and currencies equal to the advance payment, and shall submit it to the Employer with a copy to the Engineer. If the bank issuing Advance Payment Guarantee is located outside Timor-Leste, it shall be counter-guaranteed by a bank in Timor-Leste.</p> <p>The guarantee is effective 30 days beyond the duration of the contract.</p> <p>The contractor loses the right to return the deposit when:</p> <ul style="list-style-type: none">a) Does not fully comply with the contractual provisions for reasons attributable to it;b) There is an early termination of the contract for reasons attributable to it;c) Do not renew the deposit until 30 days before the end of the respective term.
GCC 14.2.3	<p>The advance payment shall be repaid through percentage deductions from payments otherwise due to the Contractor. Deductions shall commence in the next Payment Certificate following that in which the total of all payments certified to the Contractor has reached thirty percent (30%) of the Contract Price less Provisional Sums and , and shall be made at the rate of thirty percent (30%) of the amount of all Payment Certificates in the types and proportionate amounts of currencies of the Advance Payment until such time as the Advance Payment has been repaid; always provided that the Advance Payment shall be completely repaid prior to the time when 80 percent of the Contract Price has been certified for payment.</p>



MINISTÉRIO DO PLANEAMENTO
E INVESTIMENTO ESTRATÉGICO
IX GOVERNO CONSTITUCIONAL



Comissão Nacional de Aprovisionamento

THANK YOU!



CLARIFICATION No.1

Date: 07 January 2025

- 1. Rehabilitation of Road Package A, (Município Manufahi), National Road (Arterial A14) Same Luak-Betano, L=10 km (Part 1, 5.1 km) -TENDER/176/MOP-2024**
- 2. Rehabilitation of Road Package A, (Município Manufahi), National Road (Arterial A14) Same Luak-Betano, L=10 Km (Part 2, 5.05 km)- TENDER/171/MOP-2024**

No.	Question(s)	Response(s)
1.	When the site visit will be held?	<p>A site visit conducted by the Employer will be organized:</p> <p>Date/Time: 10 January 2025 Time: 10:00am – 12:00pm Timor Leste local Time Place: Start Point in Same Vila, Manufahi Municipality</p> <p>Contact Person:</p> <p>Mr. Martinho da Costa Graciano – Technical Advisor, MOP</p> <p>Tel No:+670 77719641</p> <p>The costs of visiting the site shall be bidder's own expense.</p> <p>Topography, Starting Point & Ending Point is attached as <u>Annex 1.</u></p>
2.	Bid Security Beneficiary?	<p>The beneficiary of bid security is Ministry of Public Works</p> <p>Address: Rua Jacinto de Cândido, Dili, Timor-Leste</p>
3.	Educational Qualification of Key Person (Safety Officer and Environmental Officer) should be specific qualification or can be relevant with the position?	<p>Please refer to Section 3 Evaluation and Qualification Criteria.</p>


Hermingardo Albano Soares

Executive Director of National Procurement Commission (NPC)

Annex 1: Topography, Starting Point, Ending Point

ANNEX – 1

Topography, Starting Point, Ending Point

1.1 Topography

The Same Luak – Betano road project is situated within the Manufahi municipality of Timor-Leste. This substantial roadway commences at its starting point in Same Luak and extends approximately 10 kilometers until it reaches its destination in Betano. Same Luak, a locality nestled within the broader Manufahi municipality, marks the project's point of origin. It is from this initial point that the road embarks on its transformative journey, winding through the region's captivating landscapes and varied terrains. The road project's conclusion is marked by its arrival in Betano, offering improved connectivity and transportation access to the local communities while traversing this picturesque expanse. The GPS coordinates of the two points are tabulated in **Table 2-1**. All coordinates are observed in UTM Coordinate System WGS 1984 51S (AutoCAD) and Zone: 51L (Google Earth).

Figure 2-4 illustrates the boundaries of the alignment for the Same Luak – Betano road, represented by a green line. The alignment traverses through a flat & rolling terrain, which is advantageous as it is expected to have minimal impact on the cut and fill sections during construction. The Carablum River in this area serves as a reliable irrigation system, explaining the abundance of paddy fields.

Table 2-1: GPS Coordinate of The Project Location as per TOR (PYKP, 2023)

Fixed Point	GPS Coordinates	
	Longitude (degree)	Latitude (degree)
Start Point	125.681370°	-9.058860°
End Point	125.699452°	-9.139398°

CONSULTING SERVICES FOR PREPARATION OF DETAILED ENGINEERING DESIGN (DED) FOR ROADS,
PACKAGE A (MUNICIPIO MANUPAH), NATIONAL ROAD (ARTERIAL A14) SAME LUAK – BETANO (Part 1), L = 5.1 KM



Figure 2-4: Location of Same Luak – Betano as per TOR (Google Earth, 2023)

CONSULTING SERVICES FOR PREPARATION OF DETAILED ENGINEERING DESIGN (DED) FOR ROADS,
PACKAGE A (MUNICIPIO MANUFAH) NATIONAL ROAD (ARTERIAL A14) SAME LUAK - BETANO (Part 2). 1 = 5.05 KM

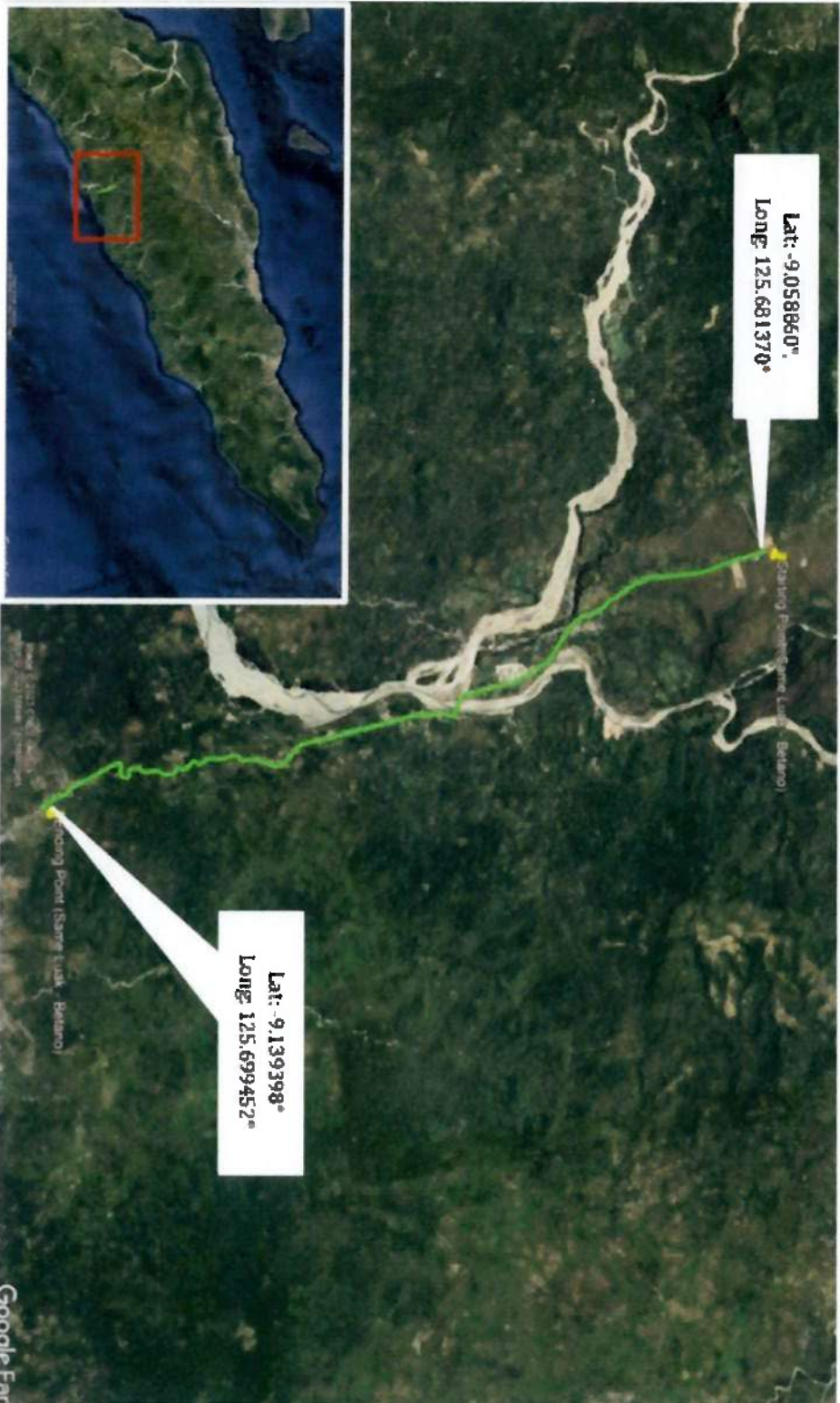


Figure 2-4: Location of Same Luak – Betano as per TOR (Google Earth, 2023)



MINISTÉRIO DO PLANEAMENTO
E INVESTIMENTO ESTRATÉGICO
IX GOVERNO CONSTITUCIONAL



Comissão Nacional de Aproveitamento

INVITATION FOR BIDS

TENDER/171/MOP-2024

Date: 19 December 2024

1. In accordance with paragraph a) (1) article 43.º, article 44.º, (2) article 73.º from de Decree-Law no. 22/2022, May 11th, amended by the Decree-Law no. 14/2023, April 12th the National Procurement Commission (NPC), as instructed by the Employer – Ministry of Public Works (MPW) - is inviting interested eligible international and national companies to submit bids for the

Rehabilitation of Road Package A (Município Manufahi), National Road (Arterial A14) Same Luak – Betano, L = 10 Km (Part 2 – 5.05 KM)

2. The Location of the project is Same, Luak, Betano, Manufahi Municipality, Timor-Leste.

3. The bidding shall be conducted with **Single Stage - Two Envelopes Procedure**, wherein the Technical Bid and Price Bid shall be submitted together in separately sealed envelopes. Participation in this bidding process is open to all interested international and national bidders. The attention of interested bidders is drawn to the key qualification criteria detailed in the Bidding Document, which include:

a. Historical Financial Performance

Submission of audited financial statements or, if not required by the law of the Bidder's country, other financial statements acceptable to the Employer, for the last three (3) years (2021, 2022 and 2023) to demonstrate the current soundness of the Bidder's financial position. As a minimum, the Bidder's net worth for the last year calculated as the difference between total assets and total liabilities should be positive.

b. Average Annual Construction Turnover

For Single Entities/Joint Ventures

Minimum average annual construction turnover of **USD 9,000,000.00** calculated as total certified payments received for contracts in progress or completed, within the last three (3) years (2021, 2022 and 2023).

c. Financial Resources

For Single Entities/Joint Ventures

The Bidder must demonstrate that its financial resources defined in FIN - 3, less its financial obligations for its current contract commitments defined in FIN - 4, meet or exceed the total requirement for the Subject Contract of **USD 1,140,000.00**

d. Contracts of Similar Size and Nature

Participation as a prime contractor or joint venture partner in at least two similar contracts that have been successfully or substantially completed between 1st January 2017 and bid submission deadline and that are similar to the proposed works, where the value of the Bidder's participation under each contract exceeds **USD 5,100,000.00**.

The similarity of the contracts shall be based on Section 6. Employers' Requirements and Scope of Works, specify the minimum key requirements in terms of physical size, complexity, construction method, technology and/or other characteristics.

e. Construction Experience in Key Activities

ANÚNCIO DE CONCURSO

TENDER/171/MOP-2024

Data: 19 de Dezembro de 2024

1. Nos termos da alínea a) do nº 1 do artigo 43.º, artigo 44.º, nº 2 do artigo 73.º do Decreto-Lei nº 22/2022 de 11 de Maio, alterado pelo Decreto-Lei nº 14/2023, de 12 de Abril, a Comissão Nacional de Aproveitamento (CNA), conforme instruída pela Entidade Adjudicante – Ministério das Obras Públicas (MOP) - convida empresas internacionais e nacionais elegíveis a apresentarem propostas para:

Reabilitação Rodoviária Nacional, Pacote A (Município de Manufahi), Estrada Principal A14, Same Luak – Betano L = 10 Km (Parte 2 – 5.05 KM)

2. A localização do projeto é em Same, Luak, Betano, no Município de Manufahi, Timor-Leste.

3. O concurso será realizado sob **Fase Única - Procedimento de dois envelopes**, sendo que as propostas Técnica e Financeira deverão ser apresentadas juntamente mas em envelopes separados e selados.

A participação neste processo de concurso está aberta a todos os candidatos internacionais e nacionais interessados. Chama-se atenção dos candidatos interessados para os principais critérios de qualificação detalhados no Caderno de Encargos, que incluem:

a. Histórico Financeiro

Apresentação de demonstrações financeiras auditadas ou, caso não seja exigido pela lei do país do candidato, outras demonstrações financeiras aceitáveis para a Entidade Adjudicante referentes aos últimos três (3) anos, (2021, 2022 e 2023) de forma a demonstrar a solidez atual da posição financeira do candidato. No mínimo, o património líquido do candidato do último ano, calculado como a diferença entre o total de ativos e o total de passivos, deverá ser positivo.

b. Média Anual de Faturação Para Entidades Únicas/Consórcios

Média anual mínima de faturação de **US\$ 9.000.000,00** calculados como o total de pagamentos certificados recebidos para contratos em curso ou concluídos, nos últimos três (3) anos (2021, 2022 e 2023).

c. Recursos Financeiros Para Entidades Únicas/Consórcios

O candidato deverá demonstrar acesso aos recursos financeiros definidos no formulário FIN-3 menos as suas obrigações financeiras para os seus compromissos contratuais atuais definidos no formulário FIN-4, a fim de cumprir ou exceder o requisito total de **US\$ 1.140.000,00**, para o Contrato em epígrafe.

d. Contratos semelhantes em dimensão e natureza

Participação como Empreiteiro principal ou sócio de Consórcio em, pelo menos, dois (2) contratos semelhantes que tenham sido satisfatoriamente/substancialmente concluídos entre 1 de Janeiro de 2017 e o prazo de apresentação de propostas para o presente concurso e que sejam semelhantes às obras propostas, sendo o montante da participação do candidato em cada contrato igual ou superior a **US\$ 5.100.000,00**.

A semelhança dos contratos basear-se-á na Secção 6, Requisitos do Contratante e Âmbito das Obras, onde se especificam os principais requisitos mínimos em termos de dimensão física, complexidade, método de construção, tecnologia e/ou outras características.



MINISTÉRIO DO PLANEAMENTO
E INVESTIMENTO ESTRATÉGICO
IX GOVERNO CONSTITUCIONAL



Comissão Nacional de Aproveitamento

For the above and any other contracts that have been successfully or substantially completed as prime contractor or joint venture member between 1st January 2017 and Bid submission deadline, a minimum construction experience in the following key activities successfully completed in one contract:

Construction of minimum of 5 km of similar road in mountainous terrain with slope protection works (retaining walls, gabions, bioengineering or similar); drainage works and earth excavation and moving operations.

The similarity of the contracts shall be based on the following: Based on Scope of Works, specify the minimum key requirements in terms of physical size, complexity, construction method, technology and/or other characteristics including part of the requirements.

- The passing score for bidder qualification is 75 %.
- Interested bidders may inspect the Bidding Documents or obtain further information from:

National Procurement Commission (NPC)
Av. de Balide, Património Estado (Ex-Dempal), Dili, Timor-Leste
Email: gf@cna.gov.tl
CC: as@cna.gov.tl, ns@cna.gov.tl, ab@cna.gov.tl, tr@cna.gov.tl,
cmenezes@cna.gov.tl
Tel: +670 3331101

- The Bidding Document can be obtained free-of-charge by any interested companies by sending through email a letter to participate in the tender to the email addresses specified above. Upon receipt of letter of intent, the National Procurement Commission (NPC) will promptly send via email a PDF copy of the documents:

- Site visit is mandatory.
For the site-visit information, the bidder may contact NPC through email: gf@cna.gov.tl
Cc: as@cna.gov.tl, ns@cna.gov.tl, ab@cna.gov.tl, tr@cna.gov.tl,
cmenezes@cna.gov.tl

All the costs of visiting the Site shall be at the Bidder's own expense.

The site visit will be announced in Pre-bid Meeting

- A pre-bid meeting will be held at 10:00 hour's local time on 07 January 2025 at the same address specified above. Attending the Pre-bid meeting is mandatory. The bidder has the option to attend the pre-bid meeting physically or virtually through Zoom in date, time and place with the above with the access as follows:

Meeting ID: 642 193 8789
Passcode: cna2021

- Bidders must enclose with their Technical Bid a Bid Security (in the form of Bank Guarantee) in the amount shown below: US\$ 68,000.00 (Sixty-Eight Thousand United States Dollar)
- The bid security shall be valid twenty-eight (28) days beyond the original validity period of the bid, or beyond any period of extension if requested under ITB 18.2

e. Experiência de construção em atividades principais

Para os contratos supracitados e quaisquer outros contratos [concluídos ou substancialmente concluídos], como empreiteiro principal ou sócio de consórcio entre 1 de Janeiro de 2017 e o prazo de apresentação de propostas para o presente concurso, deverá existir uma experiência mínima de construção nas seguintes atividades principais concluídas com sucesso:

Construção de um mínimo de 5 km de estrada semelhante em terreno montanhoso com obras de proteção de encostas (muros de contenção, gabões, bioengenharia ou semelhantes); obras de drenagem, escavação de terras e operações de deslocação.

A semelhança dos contratos basear-se-á no seguinte: âmbito das Obras onde se especificam os principais requisitos mínimos em termos de dimensão física, complexidade, método de construção, tecnologia e/ou outras características.

- A pontuação mínima de passagem para a qualificação de cada candidato é de 75 pontos.
- Os candidatos interessados poderão consultar o Caderno de Encargos do Concurso ou obter informações complementares com a:

Comissão Nacional de Aproveitamento (CNA)
Av. de Balide, Património do Estado, (ex-Dempal), Dili, Timor-Leste
Tel: +670 3331101

Email: gf@cna.gov.tl;
CC: as@cna.gov.tl; ns@cna.gov.tl; ab@cna.gov.tl;
tr@cna.gov.tl; cmenezes@cna.gov.tl

- As empresas interessadas poderão obter, gratuitamente, o Caderno de Encargos mediante o envio – por *email* – de uma carta para participação no concurso, para os endereços de *email* acima especificados. Após a receção da referida carta, a Comissão Nacional de Aproveitamento (CNA) enviará imediatamente, através de *email*, cópias em PDF dos documentos solicitados (incluindo formulários para apresentação).

- A visita ao local do projeto é obrigatória.
Para informações sobre esta visita, poderá o candidato contactar a CNA através do email: gf@cna.gov.tl
Cc: as@cna.gov.tl, ns@cna.gov.tl, ab@cna.gov.tl, tr@cna.gov.tl,
cmenezes@cna.gov.tl

Todos os custos decorrentes da visita serão por conta do candidato.

A visita ao local do projeto será anunciada na conferência Prévia

- Terá lugar uma conferência prévia pelas 10 horas (hora local), a 7 de Janeiro de 2025, no endereço supracitado. A participação na conferência prévia é obrigatória para os candidatos. Os candidatos terão a opção de participar na conferência prévia, física ou virtualmente, através de Zoom, na data, hora e local acima referidos, com o seguinte acesso:

Meeting ID: 642 193 8789
Passcode: cna2021



**MINISTÉRIO DO PLANEAMENTO
E INVESTIMENTO ESTRATÉGICO
IX GOVERNO CONSTITUCIONAL**



Comissão Nacional de Aproveitamento

11. The bid must be received in the Tender Box located at the same address specified above not later than 15:00pm hour's local time on **29 January 2025**
 12. Technical Bids will be opened at the same address at **29 January 2025 at 15:00 PM** hours Timor-Leste time and in the presence of Bidders representative who wish to attend. Technical Bids will be opened immediately after submission of bids.
 13. Any Bid or its modification received by the Employer after the deadline shall be declared late and rejected, and promptly returned unopened.
 14. Maximum budget for the assignment: **US\$ 6,840,339.41** (inclusive of Taxes). The Employer may disqualify evaluated price bids exceeding maximum budget.
 15. The duration for construction is 18 months and 12 months for Defect Notification Period
 16. Bidder shall provide justification in the price quotation if the quotation price does not reach 70% of the cost estimate/budget (abnormally low bid).
 17. The Employer shall award the contract to the Bidder with the highest combined score evaluated in accordance with the procedure specified under Section 3 – Bid Evaluation Procedure, provided further that the Bidder is determined to be qualified to perform the Contract satisfactorily.
 18. The winner of this tender will be required to submit a Performance Guarantee in the form of an unconditional and non-revocable bank guarantee. Bank Guarantee issued by an overseas bank shall have a corresponding bank in TL. Additionally, during contract implementation, the winner (awardee) will be subjected to a quality guarantee in the form of retention.
 19. Bidder shall be responsible for paying of all related taxes.
 20. The bid Validity is 180 days after the submission of the bid.
9. Os candidatos deverão anexar às suas Propostas Técnicas uma **Garantia de Proposta (sob a forma de Garantia Bancária)** no montante de **US\$ 68.000,00 (sessenta e oito mil dólares norte-americanos)**.
 10. A garantia de proposta deverá ser válida até vinte e oito (28) dias após o período original de validade da proposta, ou após qualquer período de prorrogação, caso solicitado, nos termos da ITB 18.2.
 11. As propostas deverão ser recebidas na Caixa de Concurso localizada no mesmo endereço acima especificado, o mais tardar até às **15 horas (hora local) do dia 29 de Janeiro de 2025**.
 12. As Propostas Técnicas serão abertas no mesmo endereço acima descrito, a **29 de Janeiro de 2025 às 15 horas locais de Timor-Leste** e na presença dos representantes dos Concorrentes que desejarem assistir. As Propostas Técnicas serão imediatamente abertas após a sua apresentação.
 13. Quaisquer propostas ou respetivas alterações recebidas pelo Contratante após o prazo determinado, serão declaradas tardias e rejeitadas, sendo imediatamente devolvidas sem serem abertas.
 14. Orçamento máximo para a obra: **US\$ 6.840.339,41** (incluindo impostos e outras despesas e encargos). O Contratante poderá desqualificar propostas financeiras avaliadas que excedam o orçamento máximo.
 15. A duração de construção é de **18 meses**, e o período de notificação de defeitos é de **12 meses**.
 16. O candidato deverá apresentar justificação - na proposta financeira - caso o preço proposto não atinja **70%** da estimativa de custo (preço anormalmente baixo).
 17. O Contratante deverá adjudicar o contrato ao Concorrente com a pontuação global mais elevada, avaliada de acordo com o procedimento especificado na Secção 3 – Procedimento de Avaliação de Propostas - desde que o Concorrente seja declarado como qualificado para a execução do Contrato de forma satisfatória.
 18. O vencedor deste concurso deverá apresentar uma Caução de Execução sob a forma de garantia bancária incondicional e irrevogável. A Garantia Bancária emitida por banco estrangeiro deverá ter um banco correspondente em TL. Além disso, durante a execução do contrato, o vencedor (adjudicatário) estará sujeito a uma caução de qualidade na forma de retenção.
 19. O Concorrente será responsável pelo pagamento de todos os impostos relacionados.
 20. A validade da Proposta deverá ser de 180 dias após a apresentação da mesma.

Herningardo Albano Soares

Diretor-Executivo da Comissão Nacional de Aproveitamento